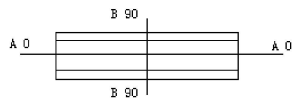
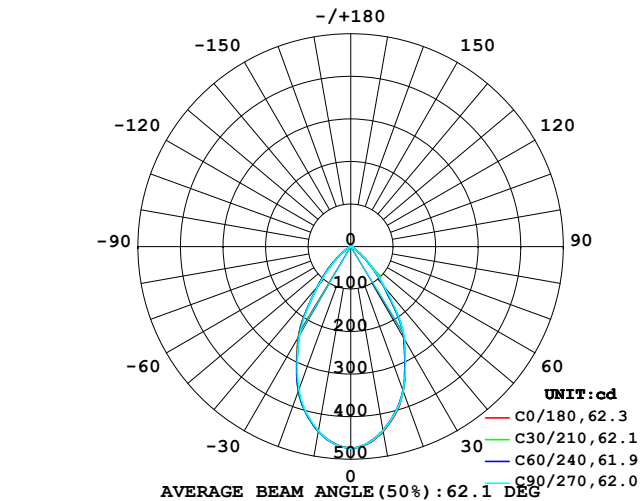


LUMINAIRE PHOTOMETRIC TEST REPORT

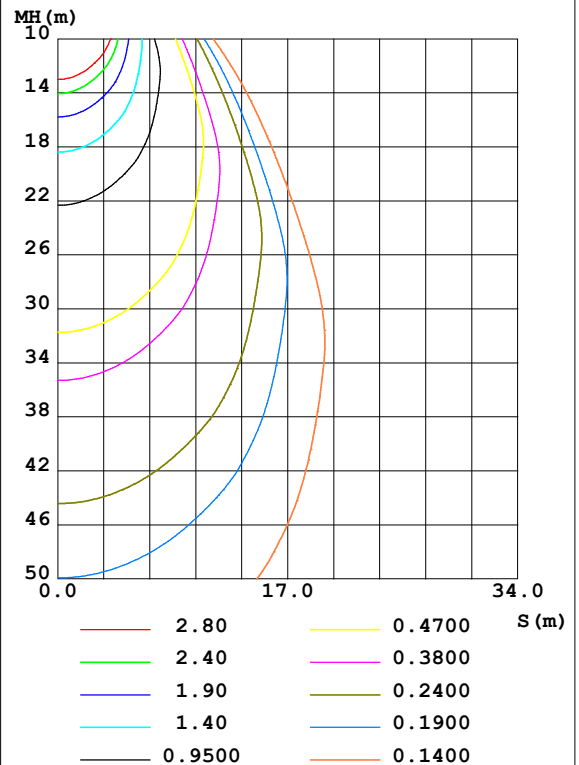
Test:U:24.00V I:0.216A P:5.18W PF:1.000 Freq:0Hz Lamp Flux:494.76x1 lm		
NAME: 32410-IP65-6000K	TYPE:	WEIGHT:
SPEC.:	DIM.:	SERIAL No.: 2025062309
MFR.:	SUR.:	Shielding Angle:

DATA OF LAMP		PHOTOMETRIC DATA Eff: 95.44 lm/W			
MODEL		Imax(cd)	473.9	S/MH(C0/180)	0.90
NOMINAL POWER(W)		LOR(%)	100.0	S/MH(C90/270)	0.89
RATED VOLTAGE(V)	24	TOTAL FLUX(lm)	494.76	η UP,DN(C0-180)	0.0,51.0
NOMINAL FLUX(lm)	494.76	CIE CLASS	DIRECT	η UP,DN(C180-360)	0.0,49.0
LAMPS INSIDE	1	η up(%)	0.0	CIBSE SHR NOM	0.75
TEST VOLTAGE(V)	24	η down(%)	100.0	CIBSE SHR MAX	0.95

LUMINOUS INTENSITY DISTRIBUTION DIAGRAM



C0 PLANE ISOLUX DIAGRAM (UNIT:lx)



C Range: 0 - 360DEG
C Interval: 15.0DEG
Test Speed: HIGH
Temperature:25DEG
Operators:SENPU
Test Date:2025-06-21

γ Range: 0 - 100DEG
 γ Interval: 1.0DEG
Test System:EVERFINE GO-2000B_V1 SYSTEM V2.00.444
Humidity:61%
Test Distance:8.000m [K=1.0000]
Remarks:

ZONAL FLUX DIAGRAM

ZONAL FLUX DIAGRAM:

γ	C0	C45	C90	C135	C180	C225	C270	C315	γ	Φ zone	Φ total	%lum,lamp
10	441.3	440.3	438.9	442.9	440.2	439.6	439.9	436.8	0- 10	43.53	43.53	8.8,8.8
20	361.3	361.4	360.5	367.8	360.7	358.1	357.1	351.4	10- 20	113.2	156.7	31.7,31.7
30	250.1	252.2	252.8	257.5	247.8	241.4	241.0	237.9	20- 30	138.3	295.1	59.6,59.6
40	119.7	120.7	123.8	128.9	119.2	118.8	117.6	110.4	30- 40	113.7	408.7	82.6,82.6
50	43.32	42.30	42.38	47.34	44.15	41.59	39.64	37.02	40- 50	59.51	468.2	94.6,94.6
60	6.570	6.675	6.664	7.622	6.567	6.112	5.847	5.169	50- 60	17.92	486.2	98.3,98.3
70	2.957	3.006	3.236	3.066	2.753	3.226	3.146	3.121	60- 70	4.106	490.3	99.1,99.1
80	1.709	1.682	1.936	1.568	1.350	2.258	2.551	2.515	70- 80	2.557	492.8	99.6,99.6
90	0.3331	1.132	0.3471	0.9366	0.0261	0.0533	0.0261	0.0350	80- 90	1.705	494.5	100,100
100	0.3225	0.1886	0.3574	0.1561	0.0261	0	0.0261	0.0261	90-100	0.2124	494.8	100,100
110	0	0	0	0	0	0	0	0	100-110	0.0068	494.8	100,100
120	0	0	0	0	0	0	0	0	110-120	0	494.8	100,100
130	0	0	0	0	0	0	0	0	120-130	0	494.8	100,100
140	0	0	0	0	0	0	0	0	130-140	0	494.8	100,100
150	0	0	0	0	0	0	0	0	140-150	0	494.8	100,100
160	0	0	0	0	0	0	0	0	150-160	0	494.8	100,100
170	0	0	0	0	0	0	0	0	160-170	0	494.8	100,100
180	0	0	0	0	0	0	0	0	170-180	0	494.8	100,100
DEG	LUMINOUS INTENSITY:cd									UNIT:lm		

Conical surface Flux(90deg): 444.49 lm

%lum = 89.8%

%lamp = 89.8%

Conical surface Flux(120deg): 486.17 lm

%lum = 98.3%

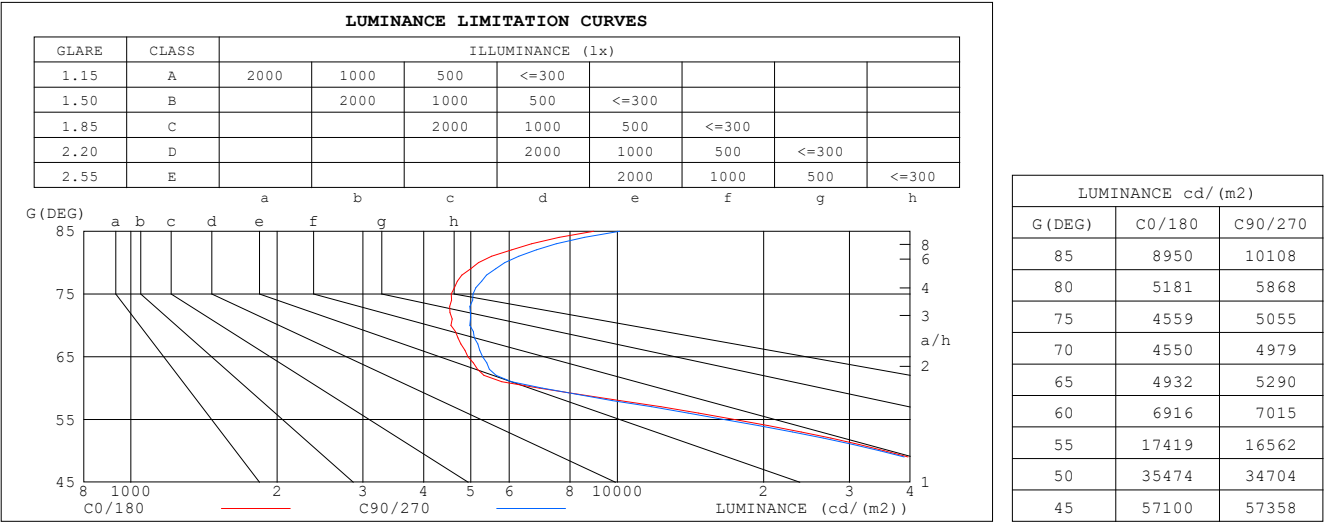
%lamp = 98.3%

C Range: 0 - 360DEG
 C Interval: 15.0DEG
 Test Speed: HIGH
 Temperature:25DEG
 Operators:SENPU
 Test Date:2025-06-21

γ Range: 0 - 100DEG
 γ Interval: 1.0DEG
 Test System:EVERFINE GO-2000B_V1 SYSTEM V2.00.444
 Humidity:61%
 Test Distance:8.000m [K=1.0000]
 Remarks:

LUMINANCE LIMITATION CURVES

Test:U:24.00V I:0.216A P:5.18W PF:1.000 Freq:0Hz		
Lamp Flux:494.76x1 lm		
NAME: 32410-IP65-6000K	TYPE:	WEIGHT:
SPEC.:	DIM.:	SERIAL No.: 2025062309
MFR.:	SUR.:	Shielding Angle:



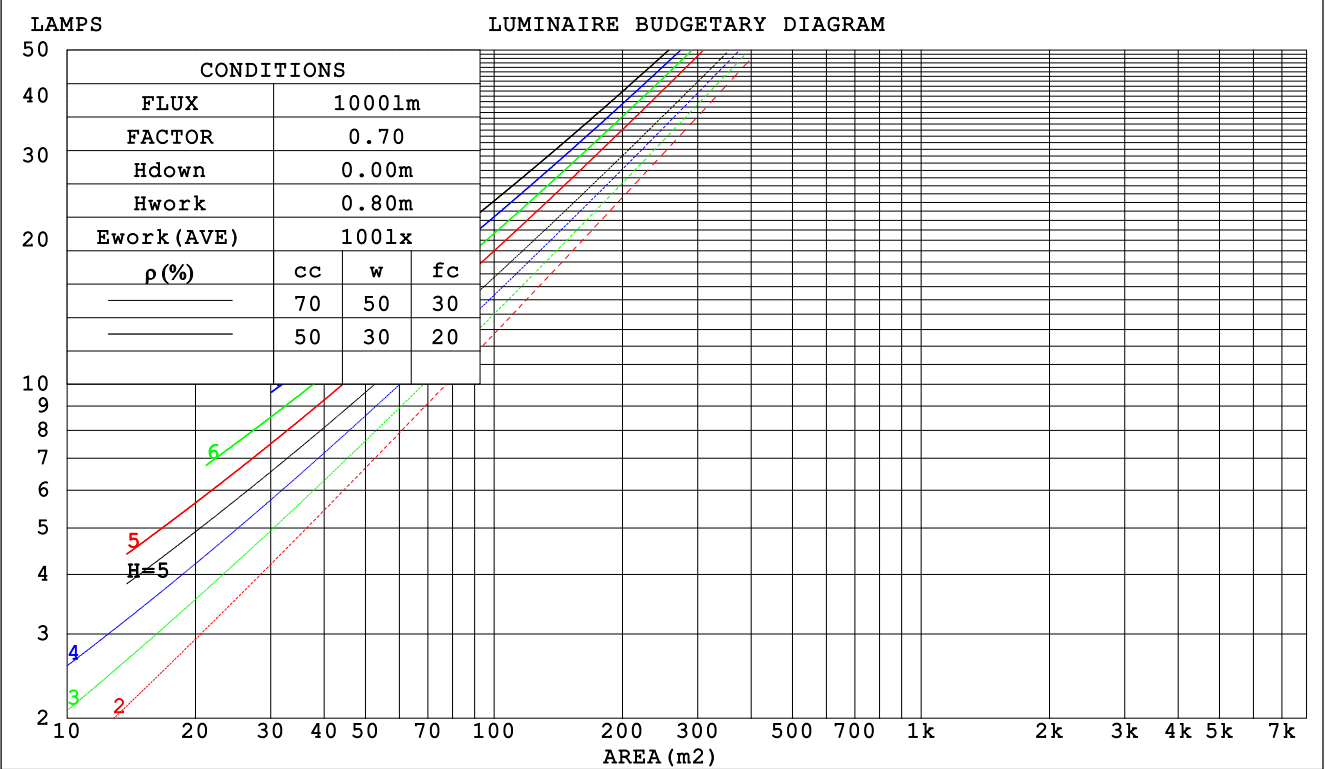
C Range: 0 - 360DEG
C Interval: 15.0DEG
Test Speed: HIGH
Temperature:25DEG
Operators:SENPU
Test Date:2025-06-21

γ Range: 0 - 100DEG
γ Interval: 1.0DEG
Test System:EVERFINE GO-2000B_V1 SYSTEM V2.00.444
Humidity:61%
Test Distance:8.000m [K=1.0000]
Remarks:

CU AND LUMINAIRE BUDGETARY ESTIMATE DIAGRAM

Test:U:24.00V I:0.216A P:5.18W PF:1.000 Freq:0Hz		
Lamp Flux:494.76x1 lm		
NAME: 32410-IP65-6000K	TYPE:	WEIGHT:
SPEC.:	DIM.:	SERIAL No.: 2025062309
MFR.:	SUR.:	Shielding Angle:

pcc	80%			70%			50%			30%			10%			0
pw	50%	30%	10%	50%	30%	10%	50%	30%	10%	50%	30%	10%	50%	30%	10%	0
pfc	20%			20%			20%			20%			20%			0
RCR	RCR:Room Cavity Ratio						Coefficients of Utilization(CU)									
0.0	1.19	1.19	1.19	1.16	1.16	1.16	1.11	1.11	1.11	1.06	1.06	1.06	1.02	1.02	1.02	.00
1.0	1.10	1.07	1.05	1.08	1.05	1.03	1.03	1.01	.00	.00	.98	.97	.96	.95	.94	.92
2.0	1.01	.97	.93	.99	.95	.92	.96	.93	.90	.93	.90	.88	.90	.88	.86	.84
3.0	.93	.88	.83	.92	.87	.83	.89	.85	.81	.87	.83	.80	.84	.81	.79	.77
4.0	.86	.80	.76	.85	.80	.75	.83	.78	.74	.81	.77	.73	.79	.75	.72	.71
5.0	.80	.74	.69	.79	.73	.69	.77	.72	.68	.76	.71	.67	.74	.70	.67	.65
6.0	.75	.68	.63	.74	.68	.63	.72	.67	.63	.71	.66	.62	.69	.65	.62	.60
7.0	.70	.63	.58	.69	.63	.58	.67	.62	.58	.66	.61	.58	.65	.61	.57	.56
8.0	.65	.59	.54	.64	.58	.54	.63	.58	.54	.62	.57	.53	.61	.57	.53	.52
9.0	.61	.55	.50	.60	.54	.50	.59	.54	.50	.59	.53	.50	.58	.53	.50	.48
10.0	.57	.51	.47	.57	.51	.47	.56	.50	.47	.55	.50	.47	.54	.50	.46	.45



C Range: 0 - 360DEG
C Interval: 15.0DEG
Test Speed: HIGH
Temperature:25DEG
Operators:SENPU
Test Date:2025-06-21

γ Range: 0 - 100DEG
γ Interval: 1.0DEG
Test System:EVERFINE GO-2000B_V1 SYSTEM V2.00.444
Humidity:61%
Test Distance:8.000m [K=1.0000]
Remarks:

WEC AND CCEC

Test:U:24.00V I:0.216A P:5.18W PF:1.000 Freq:0Hz Lamp Flux:494.76x1 lm		
NAME: 32410-IP65-6000K	TYPE:	WEIGHT:
SPEC.:	DIM.:	SERIAL No.: 2025062309
MFR.:	SUR.:	Shielding Angle:

pcc	80%			70%			50%			30%			10%			0	
pw	50%	30%	10%	50%	30%	10%	50%	30%	10%	50%	30%	10%	50%	30%	10%	0	
pfc	20%			20%			20%			20%			20%			0	
RCR	RCR:Room Cavity Ratio						Wall Exitance Coefficients (WEC)										
0.0																	
1.0	.197	.112	.036	.190	.109	.034	.178	.102	.033	.166	.096	.031	.155	.090	.029		
2.0	.189	.104	.032	.184	.101	.031	.173	.096	.030	.163	.091	.029	.154	.087	.027		
3.0	.180	.096	.029	.175	.094	.028	.166	.090	.027	.158	.086	.026	.150	.083	.026		
4.0	.172	.089	.026	.167	.088	.026	.159	.084	.025	.152	.082	.025	.145	.079	.024		
5.0	.163	.083	.024	.160	.082	.024	.152	.079	.023	.146	.077	.023	.140	.075	.022		
6.0	.155	.078	.022	.152	.077	.022	.146	.075	.022	.140	.073	.021	.135	.071	.021		
7.0	.148	.073	.021	.145	.072	.021	.140	.071	.020	.134	.069	.020	.129	.067	.020		
8.0	.141	.069	.019	.139	.068	.019	.134	.067	.019	.129	.065	.019	.125	.064	.019		
9.0	.135	.065	.018	.133	.065	.018	.128	.063	.018	.124	.062	.018	.120	.061	.018		
10.0	.129	.062	.017	.127	.061	.017	.123	.060	.017	.119	.059	.017	.115	.058	.017		

pcc	80%			70%			50%			30%			10%			0
pw	50%	30%	10%	50%	30%	10%	50%	30%	10%	50%	30%	10%	50%	30%	10%	0
pfc	20%			20%			20%			20%			20%			0
RCR	RCR:Room Cavity Ratio						Ceiling Cavity Exitance Coefficients(CCEC)									
0.0	.191	.191	.191	.163	.163	.163	.111	.111	.111	.064	.064	.064	.020	.020	.020	
1.0	.173	.157	.144	.148	.135	.124	.101	.093	.085	.058	.054	.050	.019	.017	.016	
2.0	.159	.133	.111	.136	.114	.096	.093	.079	.067	.054	.046	.039	.017	.015	.013	
3.0	.148	.114	.087	.127	.098	.076	.087	.068	.053	.050	.040	.031	.016	.013	.010	
4.0	.138	.100	.070	.118	.086	.061	.081	.060	.043	.047	.035	.025	.015	.011	.008	
5.0	.130	.088	.057	.112	.076	.050	.077	.053	.035	.045	.031	.021	.014	.010	.007	
6.0	.123	.079	.048	.106	.069	.042	.073	.048	.029	.042	.028	.018	.014	.009	.006	
7.0	.117	.072	.040	.100	.062	.035	.069	.044	.025	.040	.026	.015	.013	.008	.005	
8.0	.111	.066	.035	.096	.057	.030	.066	.040	.021	.038	.024	.013	.012	.008	.004	
9.0	.106	.061	.030	.091	.053	.026	.063	.037	.019	.037	.022	.011	.012	.007	.004	
10.0	.101	.056	.027	.087	.049	.023	.061	.034	.016	.035	.020	.010	.011	.007	.003	

C Range: 0 - 360DEG
C Interval: 15.0DEG
Test Speed: HIGH
Temperature:25DEG
Operators:SENPU
Test Date:2025-06-21

γ Range: 0 - 100DEG
γ Interval: 1.0DEG
Test System:EVERFINE GO-2000B_V1 SYSTEM V2.00.444
Humidity:61%
Test Distance:8.000m [K=1.0000]
Remarks:

UGR(Unified Glare Rating) Table

Test:U:24.00V I:0.216A P:5.18W PF:1.000 Freq:0Hz Lamp Flux:494.76x1 lm										
NAME: 32410-IP65-6000K					TYPE:			WEIGHT:		
SPEC.:					DIM.:			SERIAL No.: 2025062309		
MFR.:					SUR.:			Shielding Angle:		
ceiling/cavity	0.7	0.7	0.5	0.5	0.3	0.7	0.7	0.5	0.5	0.3
walls	0.5	0.3	0.5	0.3	0.3	0.5	0.3	0.5	0.3	0.3
working plane	0.2	0.2	0.2	0.2	0.2	0.2	0.2	0.2	0.2	0.2
Room dimensions	Viewed crosswise					Viewed endwise				
x = 2H y = 2H	22.4	23.5	22.6	23.6	23.8	22.4	23.5	22.7	23.7	23.8
3H	22.3	23.2	22.5	23.4	23.7	22.3	23.3	22.6	23.5	23.7
4H	22.2	23.1	22.5	23.3	23.6	22.3	23.2	22.5	23.4	23.6
6H	22.1	23.0	22.4	23.2	23.5	22.2	23.1	22.5	23.3	23.6
8H	22.1	22.9	22.4	23.2	23.5	22.2	23.0	22.5	23.3	23.5
12H	22.1	22.9	22.4	23.2	23.5	22.2	23.0	22.5	23.2	23.5
4H 2H	22.2	23.1	22.5	23.3	23.6	22.2	23.1	22.5	23.4	23.6
3H	22.1	22.9	22.4	23.1	23.4	22.1	22.9	22.4	23.2	23.5
4H	22.0	22.7	22.4	23.0	23.3	22.1	22.8	22.4	23.1	23.4
6H	22.0	22.6	22.4	22.9	23.3	22.1	22.7	22.4	23.0	23.4
8H	22.0	22.5	22.4	22.9	23.3	22.1	22.6	22.5	23.0	23.4
12H	22.0	22.5	22.4	22.9	23.3	22.1	22.6	22.5	23.0	23.4
8H 4H	21.9	22.5	22.3	22.8	23.2	22.0	22.5	22.4	22.9	23.3
6H	21.9	22.4	22.3	22.8	23.2	22.0	22.4	22.4	22.8	23.3
8H	21.9	22.3	22.3	22.7	23.2	22.0	22.4	22.5	22.8	23.3
12H	21.9	22.3	22.4	22.7	23.2	22.1	22.4	22.6	22.9	23.4
12H 4H	21.9	22.4	22.3	22.8	23.2	21.9	22.4	22.3	22.8	23.2
6H	21.9	22.3	22.3	22.7	23.1	21.9	22.4	22.4	22.8	23.2
8H	21.9	22.2	22.3	22.7	23.1	22.0	22.3	22.5	22.8	23.3
Variations with the observer position at spacings(CIE Pub.117):										
S = 1.0H	+ 2.2 / - 5.8					+ 2.3 / - 5.6				
1.5H	+ 3.0 / - 4.9					+ 3.2 / - 4.9				
2.0H	+ 5.0 / - 5.9					+ 5.0 / - 5.3				

CIE Pub.117, 494.8 lm Total Lamp Luminous Flux Corrected ($8\log(F/F_0) = -2.4$)
Area: 0.0019 m²

C Range: 0 - 360DEG
C Interval: 15.0DEG
Test Speed: HIGH
Temperature:25DEG
Operators:SENPU
Test Date:2025-06-21

γ Range: 0 - 100DEG
 γ Interval: 1.0DEG
Test System:EVERFINE GO-2000B_V1 SYSTEM V2.00.444
Humidity:61%
Test Distance:8.000m [K=1.0000]
Remarks:

UTILIZATION FACTORS TABLE

Test:U:24.00V I:0.216A P:5.18W PF:1.000 Freq:0Hz Lamp Flux:494.76x1 lm		
NAME: 32410-IP65-6000K	TYPE:	WEIGHT:
SPEC.:	DIM.:	SERIAL No.: 2025062309
MFR.:	SUR.:	Shielding Angle:

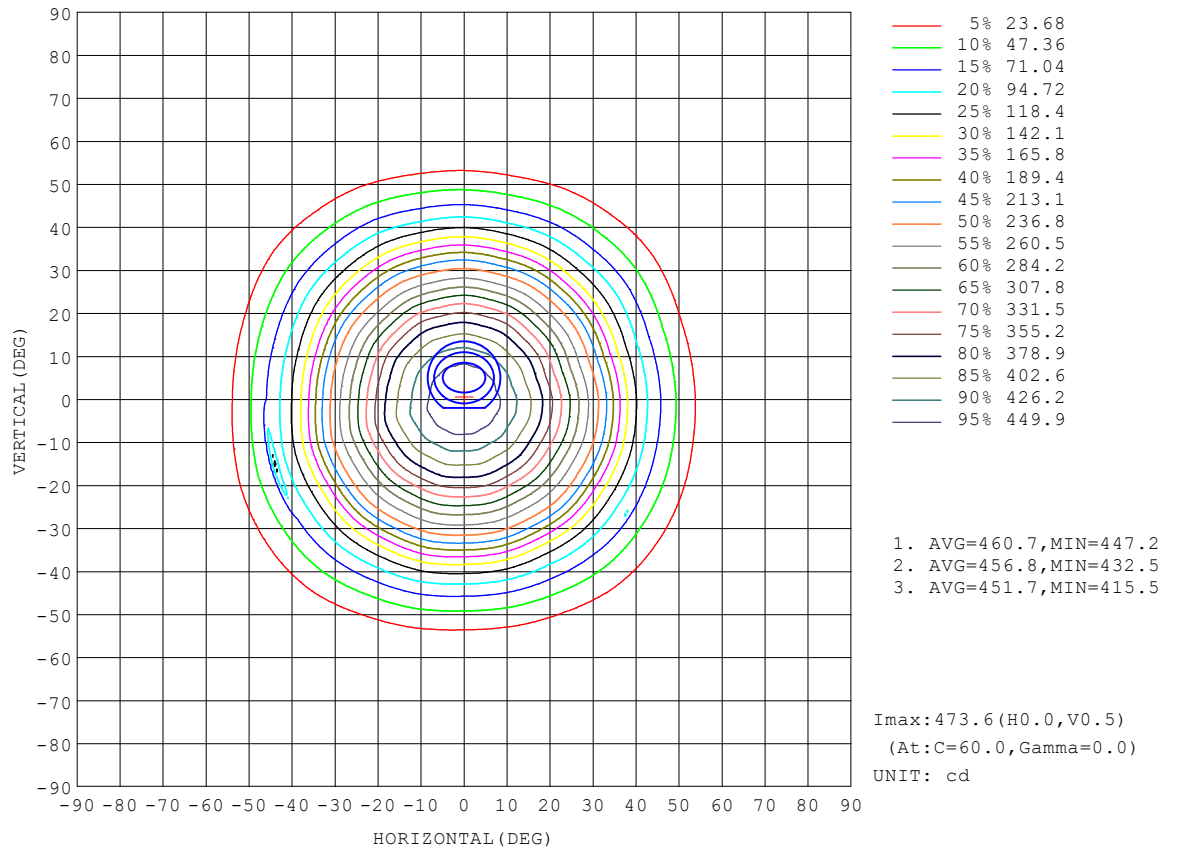
REFLECTANCE										
Ceiling	0.8	0.8	0.8	0.7	0.7	0.7	0.5	0.5	0.5	0
Walls	0.7	0.5	0.3	0.7	0.5	0.3	0.7	0.5	0.3	0
Working plane	0.2	0.2	0.2	0.2	0.2	0.2	0.2	0.2	0.2	0
ROOM INDEX	UTILIZATION FACTORS (PERCENT) $k(RI) \times RCR = 5$									
$k = 0.60$	80	73	68	80	73	68	79	72	68	64
0.80	89	82	77	88	82	77	87	81	77	73
1.00	95	88	84	94	88	84	92	88	83	79
1.25	100	94	89	99	93	89	96	92	88	84
1.50	103	97	93	102	97	93	99	95	92	87
2.00	106	102	98	105	101	97	102	99	96	90
2.50	108	104	100	107	103	100	104	100	98	91
3.00	110	106	103	108	105	102	105	102	100	93
4.00	112	109	107	110	108	105	107	104	102	95
5.00	114	111	109	112	109	107	108	106	104	96
ROOM INDEX	UF (total)									Direct
According to DIN EN 13032-2 2004			Suspended					SHRNOM = 1.25		

C Range: 0 - 360DEG
 C Interval: 15.0DEG
 Test Speed: HIGH
 Temperature: 25DEG
 Operators: SENPU
 Test Date: 2025-06-21

γ Range: 0 - 100DEG
 γ Interval: 1.0DEG
 Test System: EVERFINE GO-2000B_V1 SYSTEM V2.00.444
 Humidity: 61%
 Test Distance: 8.000m [K=1.0000]
 Remarks:

ISOCANDELA DIAGRAM

Test:U:24.00V I:0.216A P:5.18W PF:1.000 Freq:0Hz Lamp Flux:494.76x1 lm		
NAME: 32410-IP65-6000K	TYPE:	WEIGHT:
SPEC.:	DIM.:	SERIAL No.: 2025062309
MFR.:	SUR.:	Shielding Angle:

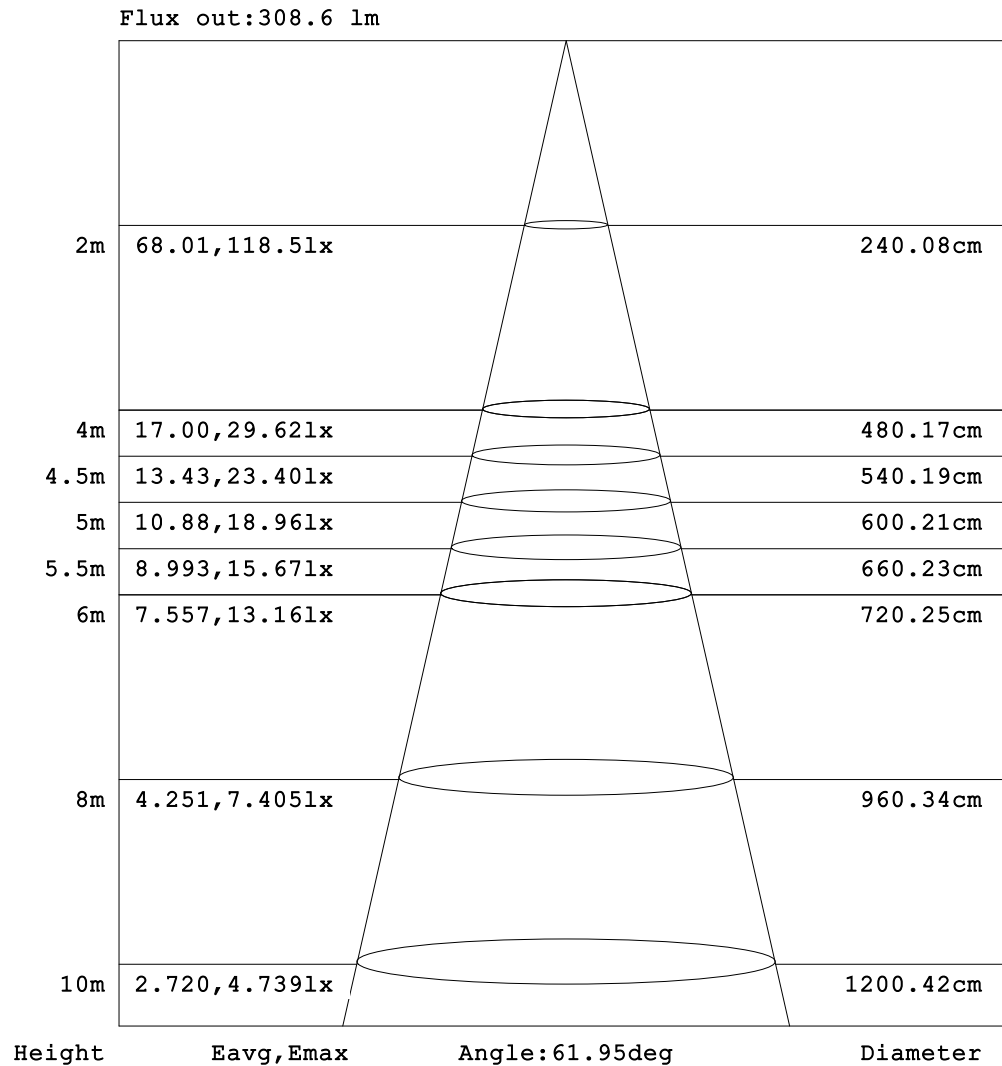


C Range: 0 - 360DEG
C Interval: 15.0DEG
Test Speed: HIGH
Temperature:25DEG
Operators:SENPU
Test Date:2025-06-21

γ Range: 0 - 100DEG
 γ Interval: 1.0DEG
Test System:EVERFINE GO-2000B_V1 SYSTEM V2.00.444
Humidity:61%
Test Distance:8.000m [K=1.0000]
Remarks:

AAI Figure

Test:U:24.00V I:0.216A P:5.18W PF:1.000 Freq:0Hz Lamp Flux:494.76x1 lm		
NAME: 32410-IP65-6000K	TYPE:	WEIGHT:
SPEC.:	DIM.:	SERIAL No.: 2025062309
MFR.:	SUR.:	Shielding Angle:



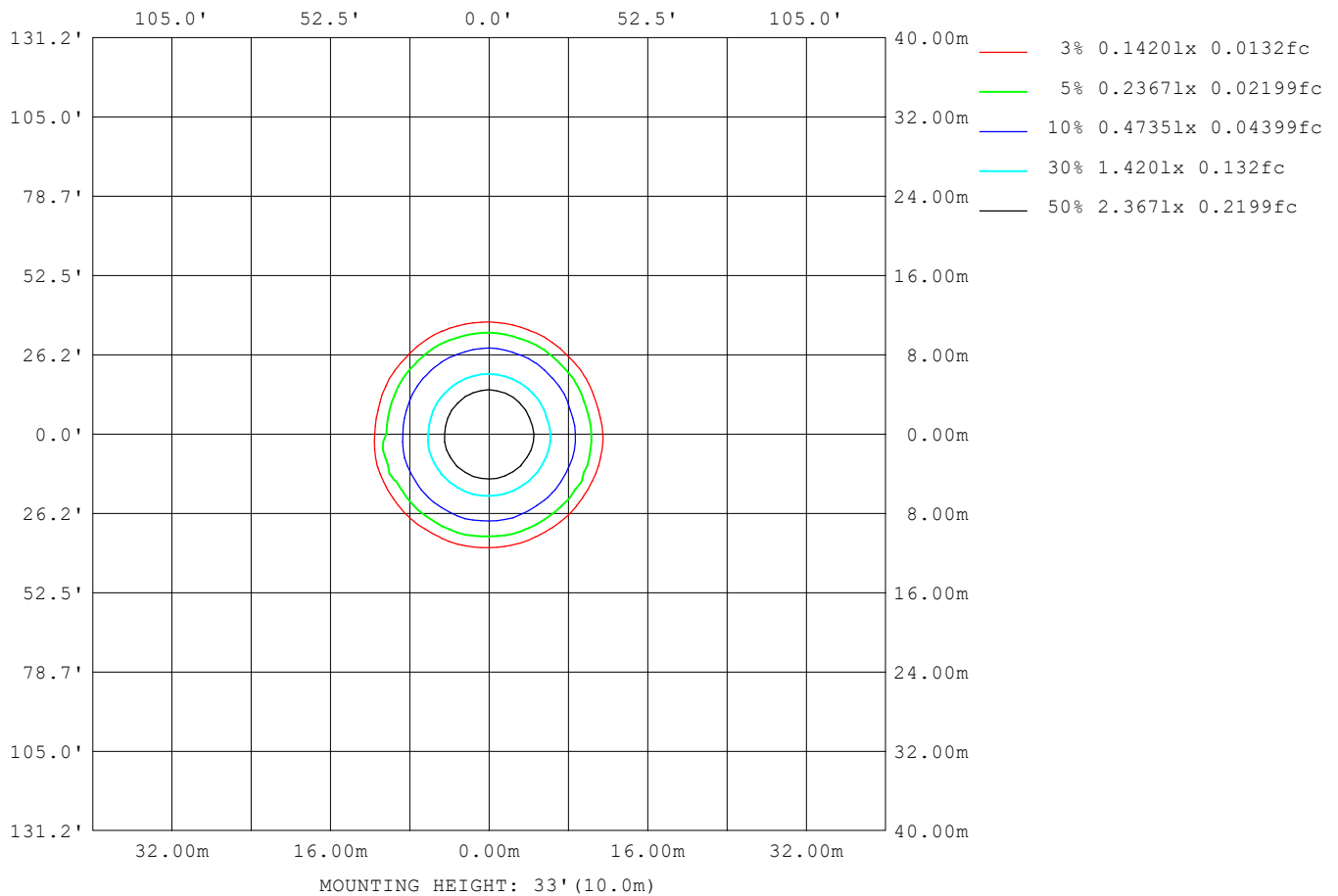
Note: The Curves indicate the illuminated area and the average illumination when the luminaire is at different distance.

C Range: 0 - 360DEG
C Interval: 15.0DEG
Test Speed: HIGH
Temperature: 25DEG
Operators: SENPU
Test Date: 2025-06-21

γ Range: 0 - 100DEG
γ Interval: 1.0DEG
Test System: EVERFINE GO-2000B_V1 SYSTEM V2.00.444
Humidity: 61%
Test Distance: 8.000m [K=1.0000]
Remarks:

ISOLUX DIAGRAM

Test:U:24.00V I:0.216A P:5.18W PF:1.000 Freq:0Hz Lamp Flux:494.76x1 lm		
NAME: 32410-IP65-6000K	TYPE:	WEIGHT:
SPEC.:	DIM.:	SERIAL No.: 2025062309
MFR.:	SUR.:	Shielding Angle:



C Range: 0 - 360DEG
 C Interval: 15.0DEG
 Test Speed: HIGH
 Temperature: 25DEG
 Operators: SENPU
 Test Date: 2025-06-21

γ Range: 0 - 100DEG
 γ Interval: 1.0DEG
 Test System: EVERFINE GO-2000B_V1 SYSTEM V2.00.444
 Humidity: 61%
 Test Distance: 8.000m [K=1.0000]
 Remarks:

LED Avg.L Report

Test:U:24.00V I:0.216A P:5.18W PF:1.000 Freq:0Hz Lamp Flux:494.76x1 lm		
NAME: 32410-IP65-6000K	TYPE:	WEIGHT:
SPEC.:	DIM.:	SERIAL No.: 2025062309
MFR.:	SUR.:	Shielding Angle:

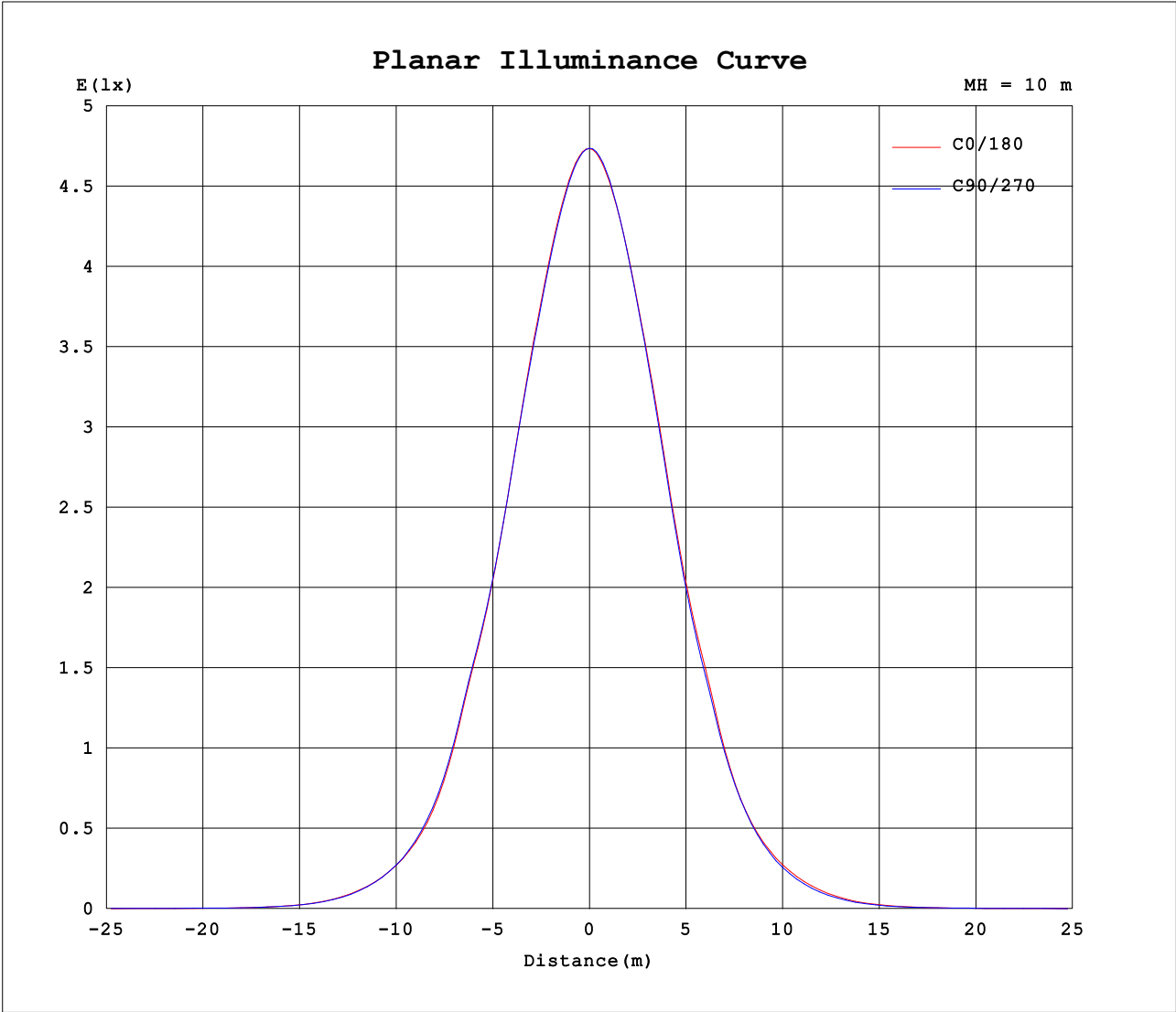
AvgL	cd/m2
L_0~180 (65) av	4852
L_0~180 (75) av	4245
L_0~180 (85) av	7578
L_90~270 (65) av	5048
L_90~270 (75) av	5230
L_90~270 (85) av	12687
L_45 (65) av	5001
L_45 (75) av	4945
L_45 (85) av	10965

Standard: GB/T 29293-2012

C Range: 0 - 360DEG
C Interval: 15.0DEG
Test Speed: HIGH
Temperature:25DEG
Operators:SENPU
Test Date:2025-06-21

γ Range: 0 - 100DEG
γ Interval: 1.0DEG
Test System:EVERFINE GO-2000B_V1 SYSTEM V2.00.444
Humidity:61%
Test Distance:8.000m [K=1.0000]
Remarks:

Planar Illuminance Curve



C Range: 0 - 360DEG
C Interval: 15.0DEG
Test Speed: HIGH
Temperature:25DEG
Operators:SENPU
Test Date:2025-06-21

γ Range: 0 - 100DEG
γ Interval: 1.0DEG
Test System:EVERFINE GO-2000B_V1 SYSTEM V2.00.444
Humidity:61%
Test Distance:8.000m [K=1.0000]
Remarks:

LUMINOUS DISTRIBUTION INTENSITY DATA

Test:U:24.00V I:0.216A P:5.18W PF:1.000 Freq:0Hz Lamp Flux:494.76x1 lm		
NAME: 32410-IP65-6000K	TYPE:	WEIGHT:
SPEC.:	DIM.:	SERIAL No.: 2025062309
MFR.:	SUR.:	Shielding Angle:

Table--1

UNIT: cd

C (DEG) γ (DEG)	0	15	30	45	60	75	90	105	120	135	150	165	180	195	210	225	240	255	270
0	473	474	474	474	474	474	474	474	474	474	473	473	473	474	474	474	474	474	474
5	465	465	464	464	464	464	464	464	464	465	465	466	463	463	464	463	465	464	465
10	441	442	439	440	438	440	439	441	441	443	442	444	440	440	441	440	441	439	440
15	407	408	405	406	403	406	404	408	407	410	409	412	406	405	407	405	406	403	404
20	361	362	359	361	360	362	361	364	364	368	367	370	361	357	361	358	361	355	357
25	304	307	303	305	302	305	305	309	308	311	309	312	302	298	301	296	300	295	298
30	250	253	250	252	250	253	253	256	255	257	255	257	248	245	246	241	243	240	241
35	185	189	184	188	184	191	189	196	193	197	192	195	181	178	181	178	181	177	178
40	120	122	119	121	119	123	124	128	127	129	126	128	119	118	121	119	120	116	118
45	76.7	77.5	98.3	76.0	75.0	77.1	77.1	80.7	80.2	82.1	81.0	83.4	77.7	76.0	77.7	75.4	76.7	72.8	73.0
50	43.3	44.2	42.3	42.3	40.9	42.4	42.4	44.7	44.6	47.3	47.6	49.2	44.1	42.8	43.7	41.6	42.3	40.2	39.6
55	19.0	19.7	18.6	18.6	17.6	18.3	18.0	19.6	19.7	21.5	21.4	22.3	19.2	18.1	18.9	17.4	18.1	16.3	16.8
60	6.57	6.74	6.51	6.67	6.42	6.70	6.66	7.14	7.23	7.62	7.47	7.79	6.57	6.35	6.50	6.11	6.31	5.84	5.85
65	3.96	3.92	4.01	4.04	4.06	4.15	4.25	4.21	4.27	4.18	4.09	4.06	3.83	3.87	3.95	4.05	4.03	3.94	3.86
70	2.96	2.86	2.98	3.01	3.09	3.15	3.24	3.15	3.20	3.07	2.97	2.96	2.75	2.94	3.02	3.23	3.24	3.19	3.15
75	2.24	2.06	2.17	2.25	2.36	2.39	2.49	2.38	2.38	2.20	2.12	2.11	1.93	2.21	2.35	2.59	2.64	2.70	2.66
80	1.71	1.48	1.61	1.68	1.83	1.85	1.94	1.81	1.82	1.57	1.49	1.46	1.35	1.69	1.93	2.26	2.40	2.46	2.55
85	1.48	1.23	1.32	1.39	1.59	1.58	1.67	1.53	1.48	1.18	1.12	1.08	1.03	1.46	1.48	2.15	2.36	2.45	2.53
90	0.33	0.56	0.39	1.13	0.33	0.84	0.35	1.01	0.34	0.94	0.39	0.83	0.03	0.04	0.00	0.05	0.02	0.05	0.03
95	0.34	0.31	0.23	0.66	0.18	0.42	0.35	0.34	0.20	0.55	0.23	0.49	0.03	0.02	0.00	0.03	0.01	0.03	0.03
100	0.32	0.09	0.07	0.19	0.03	0.35	0.36	0.14	0.06	0.16	0.06	0.14	0.03	0.01	0.00	0.00	0.00	0.03	0.03
105	0.00	0.00	0.00	0.00	0.00	0.00	0.00	0.00	0.00	0.00	0.00	0.00	0.00	0.00	0.00	0.00	0.00	0.00	0.00
110	0.00	0.00	0.00	0.00	0.00	0.00	0.00	0.00	0.00	0.00	0.00	0.00	0.00	0.00	0.00	0.00	0.00	0.00	0.00
115	0.00	0.00	0.00	0.00	0.00	0.00	0.00	0.00	0.00	0.00	0.00	0.00	0.00	0.00	0.00	0.00	0.00	0.00	0.00
120	0.00	0.00	0.00	0.00	0.00	0.00	0.00	0.00	0.00	0.00	0.00	0.00	0.00	0.00	0.00	0.00	0.00	0.00	0.00
125	0.00	0.00	0.00	0.00	0.00	0.00	0.00	0.00	0.00	0.00	0.00	0.00	0.00	0.00	0.00	0.00	0.00	0.00	0.00
130	0.00	0.00	0.00	0.00	0.00	0.00	0.00	0.00	0.00	0.00	0.00	0.00	0.00	0.00	0.00	0.00	0.00	0.00	0.00
135	0.00	0.00	0.00	0.00	0.00	0.00	0.00	0.00	0.00	0.00	0.00	0.00	0.00	0.00	0.00	0.00	0.00	0.00	0.00
140	0.00	0.00	0.00	0.00	0.00	0.00	0.00	0.00	0.00	0.00	0.00	0.00	0.00	0.00	0.00	0.00	0.00	0.00	0.00
145	0.00	0.00	0.00	0.00	0.00	0.00	0.00	0.00	0.00	0.00	0.00	0.00	0.00	0.00	0.00	0.00	0.00	0.00	0.00
150	0.00	0.00	0.00	0.00	0.00	0.00	0.00	0.00	0.00	0.00	0.00	0.00	0.00	0.00	0.00	0.00	0.00	0.00	0.00
155	0.00	0.00	0.00	0.00	0.00	0.00	0.00	0.00	0.00	0.00	0.00	0.00	0.00	0.00	0.00	0.00	0.00	0.00	0.00
160	0.00	0.00	0.00	0.00	0.00	0.00	0.00	0.00	0.00	0.00	0.00	0.00	0.00	0.00	0.00	0.00	0.00	0.00	0.00
165	0.00	0.00	0.00	0.00	0.00	0.00	0.00	0.00	0.00	0.00	0.00	0.00	0.00	0.00	0.00	0.00	0.00	0.00	0.00
170	0.00	0.00	0.00	0.00	0.00	0.00	0.00	0.00	0.00	0.00	0.00	0.00	0.00	0.00	0.00	0.00	0.00	0.00	0.00
175	0.00	0.00	0.00	0.00	0.00	0.00	0.00	0.00	0.00	0.00	0.00	0.00	0.00	0.00	0.00	0.00	0.00	0.00	0.00
180	0.00	0.00	0.00	0.00	0.00	0.00	0.00	0.00	0.00	0.00	0.00	0.00	0.00	0.00	0.00	0.00	0.00	0.00	0.00

C Range: 0 - 360DEG
C Interval: 15.0DEG
Test Speed: HIGH
Temperature:25DEG
Operators:SENPU
Test Date:2025-06-21

γ Range: 0 - 100DEG
γ Interval: 1.0DEG
Test System:EVERFINE GO-2000B_V1 SYSTEM V2.00.444
Humidity:61%
Test Distance:8.000m [K=1.0000]
Remarks:

LUMINOUS DISTRIBUTION INTENSITY DATA

Test:U:24.00V I:0.216A P:5.18W PF:1.000 Freq:0Hz Lamp Flux:494.76x1 lm		
NAME: 32410-IP65-6000K	TYPE:	WEIGHT:
SPEC.:	DIM.:	SERIAL No.: 2025062309
MFR.:	SUR.:	Shielding Angle:

Table--2

UNIT: cd

C (DEG) γ (DEG)	285	300	315	330	345														
0	474	474	474	473	473														
5	464	464	463	464	462														
10	437	439	437	438	436														
15	402	403	401	402	401														
20	354	356	351	354	351														
25	294	296	291	294	292														
30	237	240	238	241	240														
35	173	174	170	172	171														
40	113	114	110	113	111														
45	70.2	70.8	68.8	71.7	70.4														
50	37.6	38.1	37.0	38.9	38.0														
55	15.3	15.9	14.8	16.3	15.6														
60	5.43	5.54	5.17	5.55	5.35														
65	3.82	3.79	3.79	3.81	3.79														
70	3.16	3.15	3.12	3.01	2.92														
75	2.70	2.68	2.69	2.48	2.25														
80	2.53	2.56	2.52	2.01	1.86														
85	2.51	2.68	2.54	1.49	1.73														
90	0.04	0.00	0.04	0.02	0.03														
95	0.03	0.00	0.03	0.02	0.03														
100	0.00	0.00	0.03	0.02	0.03														
105	0.00	0.00	0.00	0.00	0.00														
110	0.00	0.00	0.00	0.00	0.00														
115	0.00	0.00	0.00	0.00	0.00														
120	0.00	0.00	0.00	0.00	0.00														
125	0.00	0.00	0.00	0.00	0.00														
130	0.00	0.00	0.00	0.00	0.00														
135	0.00	0.00	0.00	0.00	0.00														
140	0.00	0.00	0.00	0.00	0.00														
145	0.00	0.00	0.00	0.00	0.00														
150	0.00	0.00	0.00	0.00	0.00														
155	0.00	0.00	0.00	0.00	0.00														
160	0.00	0.00	0.00	0.00	0.00														
165	0.00	0.00	0.00	0.00	0.00														
170	0.00	0.00	0.00	0.00	0.00														
175	0.00	0.00	0.00	0.00	0.00														
180	0.00	0.00	0.00	0.00	0.00														

C Range: 0 - 360DEG
 C Interval: 15.0DEG
 Test Speed: HIGH
 Temperature:25DEG
 Operators:SENPU
 Test Date:2025-06-21

γ Range: 0 - 100DEG
 γ Interval: 1.0DEG
 Test System:EVERFINE GO-2000B_V1 SYSTEM V2.00.444
 Humidity:61%
 Test Distance:8.000m [K=1.0000]
 Remarks: